



LEGEND	
	OVERALL DRAINAGE AREA BOUNDARY
	100 YR FLOODPLAIN PER FEMA MAP #42670020C DATED April 16, 2014

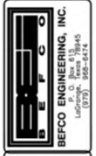
**NOTES**

- DRAINAGE CALCULATIONS SHOWN ON THIS SHEET BASED ON RATIONAL METHOD AND TxDOT HYDRAULIC DESIGN MANUAL, REVISED SEPTEMBER 2018.
- TIME OF CONCENTRATION IS  $T_c = 10$  MINUTES MINIMUM PER TxDOT DRAINAGE CRITERIA MANUAL.
- C COEFFICIENT PER TxDOT DRAINAGE CRITERIA MANUAL, C=0.50 FOR SINGLE FAMILY AREAS, C=0.80 FOR COMMERCIAL AREAS. WEIGHTED C FACTOR UTILIZES THESE C FACTORS FOR MIXED AREAS.
- FLOW SHOWN IS RUNOFF IN 100 YEAR STORM EVENT WITH ATLAS 14 RAINFALL INTENSITIES.
- TOPOGRAPHY SHOWN IS 2 FOOT CONTOUR INTERVALS DOWNLOADED FROM TNMS - USGS 2018 EASTERN TEXAS DATA SOURCE.



**30% SET  
03/01/2024  
FOR REVIEW**

**Texas Registered  
Engineering Firm  
P-2011**



**CITY OF LEXINGTON**  
**GLO CDBG-MIT DRAINAGE IMPROVEMENTS**  
CONTRACT NO. 22-085-044-D297

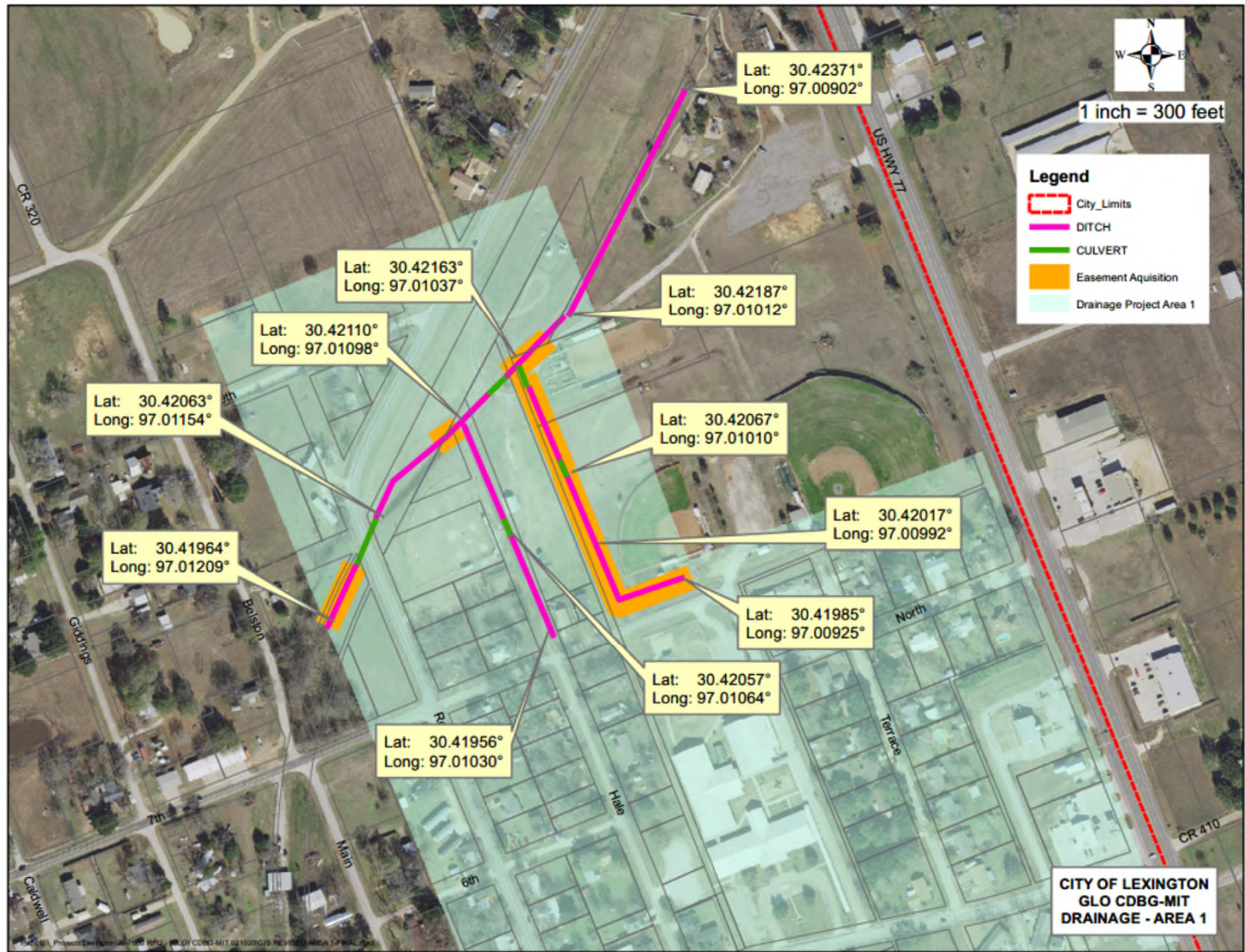
REVISION:	
1.	
2.	
3.	
4.	
5.	
6.	
7.	
8.	
9.	
10.	

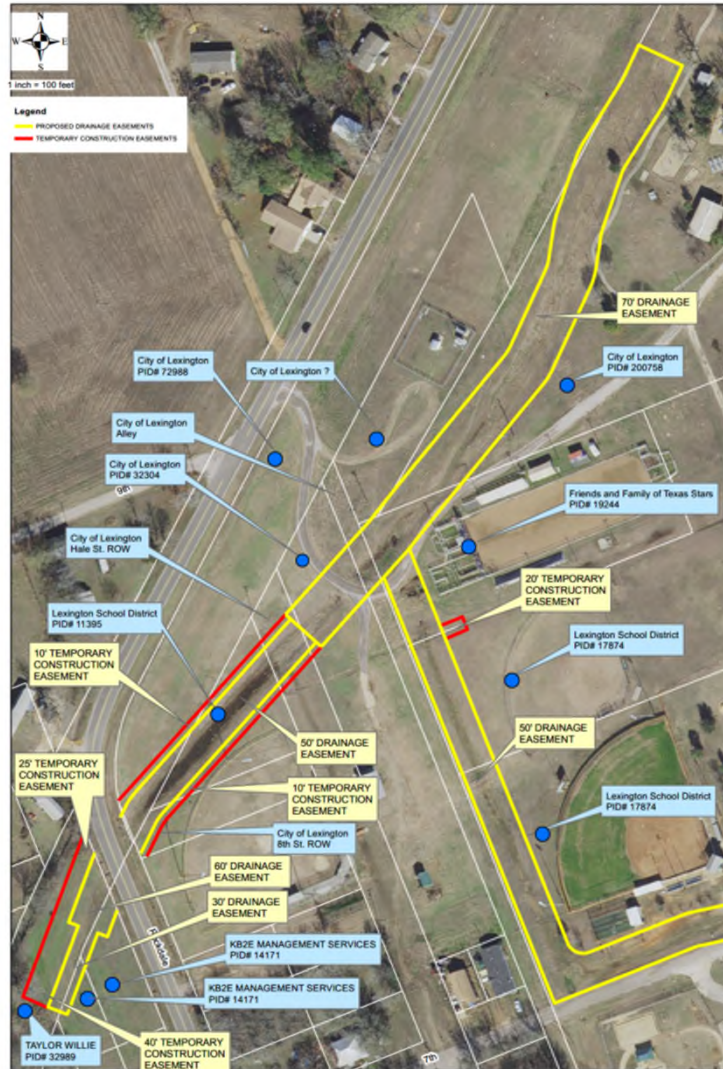
DRAWN BY: *sk*  
 CHECKED BY: *cm*  
 BEFCO JOB NO: 22-760  
 PLOT SCALE: 1" = 400'

SHEET TITLE  
**OVERALL DRAINAGE AREA BOUNDARY**

DATE ISSUED: 01/31/23

SHEET  
**45**



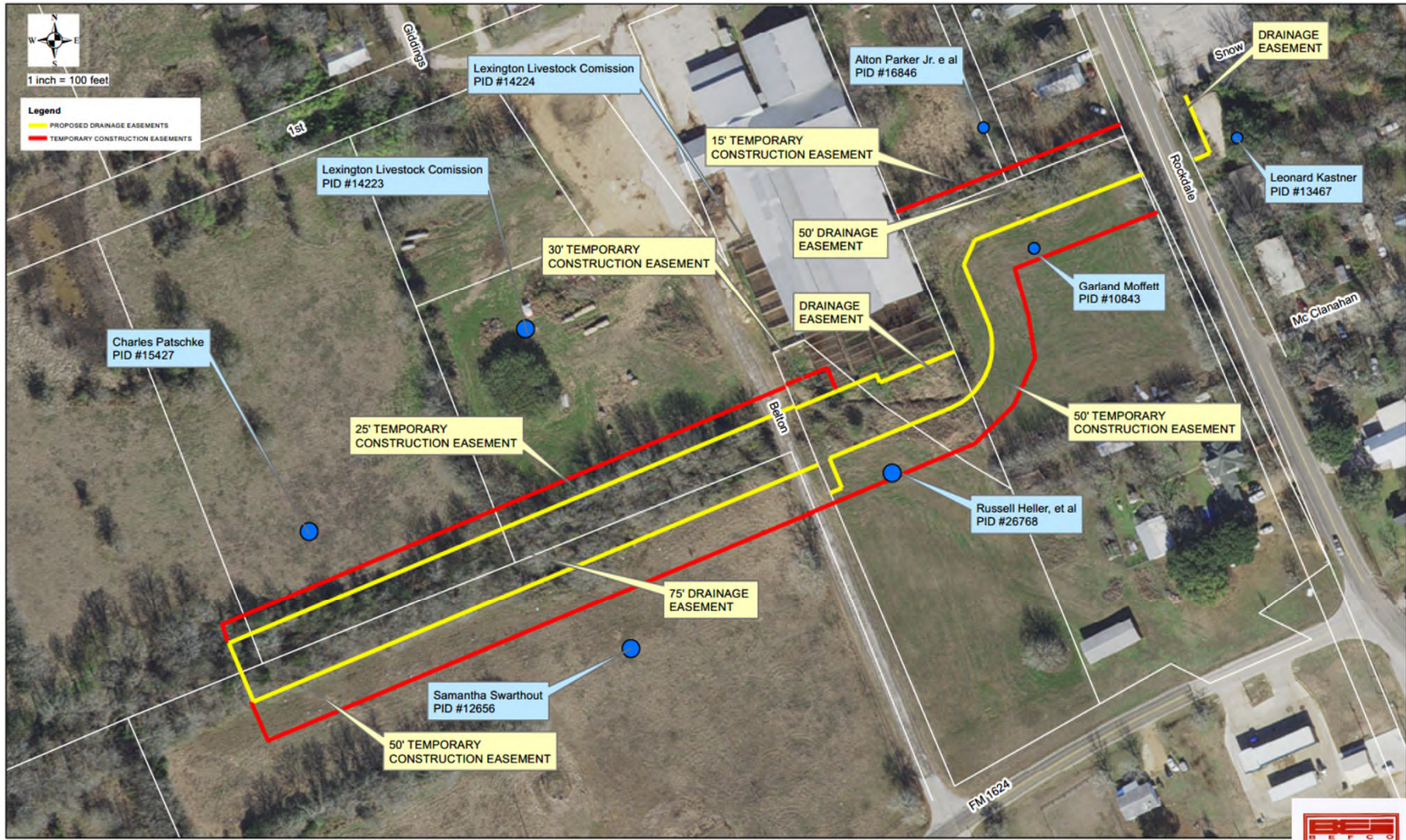


**LEXINGTON GLO CDBG-MIT DRAINAGE  
AREA 1 EASEMENT EXHIBIT**

Path: S:\\_Projects\Lexington\20-7630 RFQ - (GLO) CDBG-MIT 021020\GIS\EASEMENT MAPS-AREA 1.mxd

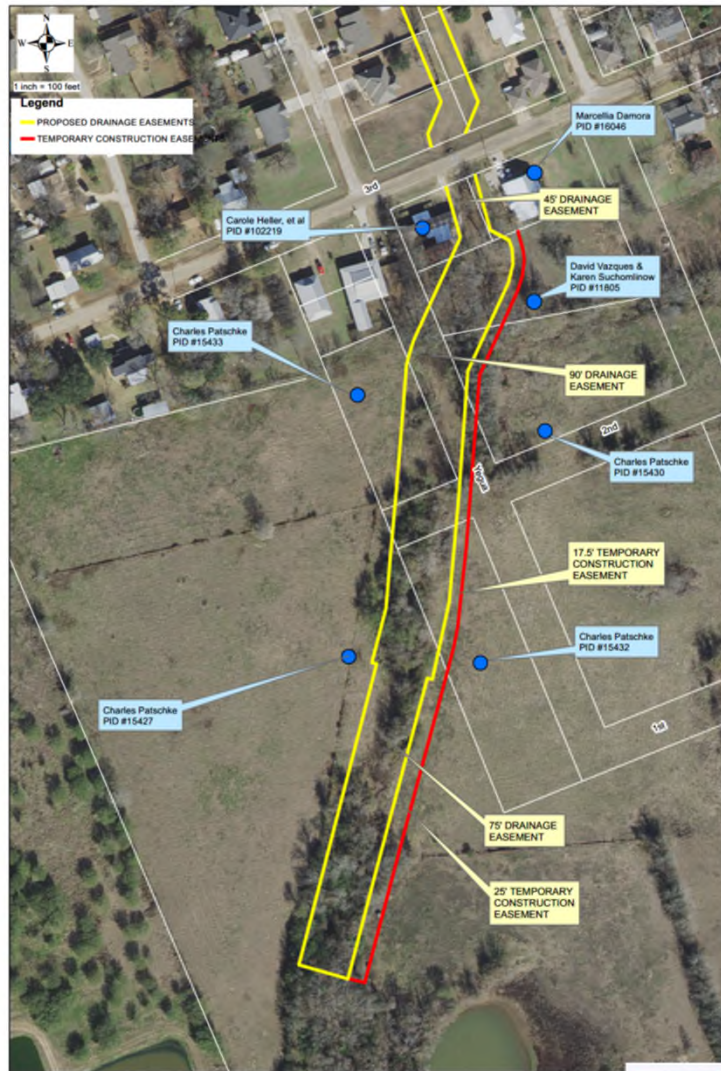






**LEXINGTON GLO CDBG-MIT DRAINAGE  
AREA 2A EASEMENT EXHIBIT**





**LEXINGTON GLO CDBG-MIT DRAINAGE  
AREA 2B-2 OF 2 EASEMENT EXHIBIT**

Path: S:\\_Projects\Lexington\20-7830 R\FQ - (GLO) CDBG-MIT 021020\GIS\EASEMENT MAPS-AREA2B-SHT 2.mxd

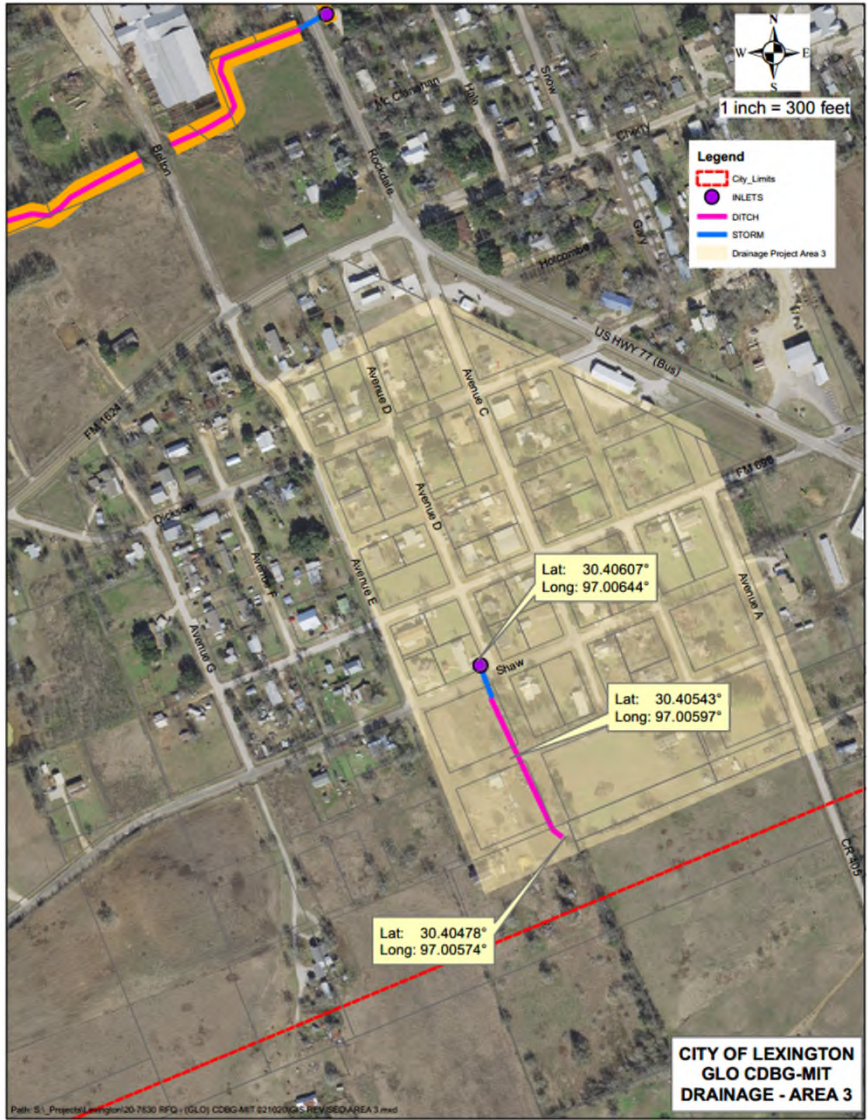




**LEXINGTON GLO CDBG-MIT DRAINAGE  
AREA 2B-1 OF 2 EASEMENT EXHIBIT**

Path: S:\\_Projects\Lexington\20-7630 RFQ - (GLO) CDBG-MIT 021020\GIS\EASEMENT MAPS-AREA2B-SHT1.mxd









**LEXINGTON GLO CDBG-MIT DRAINAGE  
AREA 3 EASEMENT EXHIBIT**

Path: S:\\_Projects\Lexington\20-7630 RFG - (GLO) CDBG-MIT 021020\GIS\EASEMENT MAPS-AREA3.mxd

